

AVAILABLE!

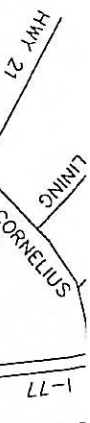
Prime Mooresville Flex Space

- 24,000 square foot single-story tilt wall Construction
- Located in Mooresville near Exit 36 off I-77
- 24' clear with 12' drop ceilings
- 25 private offices
- 75 workstations (most are 8'x8')
- 77 parking spaces with the ability to add more
- Server room with dedicated Liebet unit

116 EXMORE ROAD MOORESVILLE, NC



VICINITY MAP *** NO SCALE

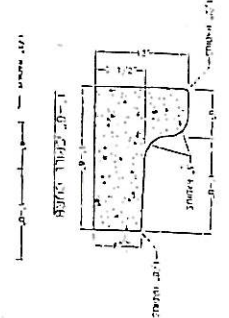


RONNIE L & LEE A. SMITH
 1758/1799 1235/271
 TAX ID# 4648942349
 ZONED: M1-CUD
 78.20 AC. +/- REMAINING
 (LAND USE: OFFICE/WAREHOUSE)

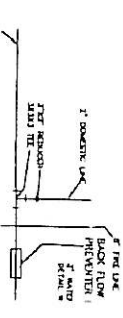
50. PUBLIC ROAD R/W
 S.R.# 1472

LEGEND
 EXISTING CONTOURS
 10' TO 20' SIGHT TRIANGLE
 WATER FLOW
 SANITARY SERVICE LINE
 WATER LINE

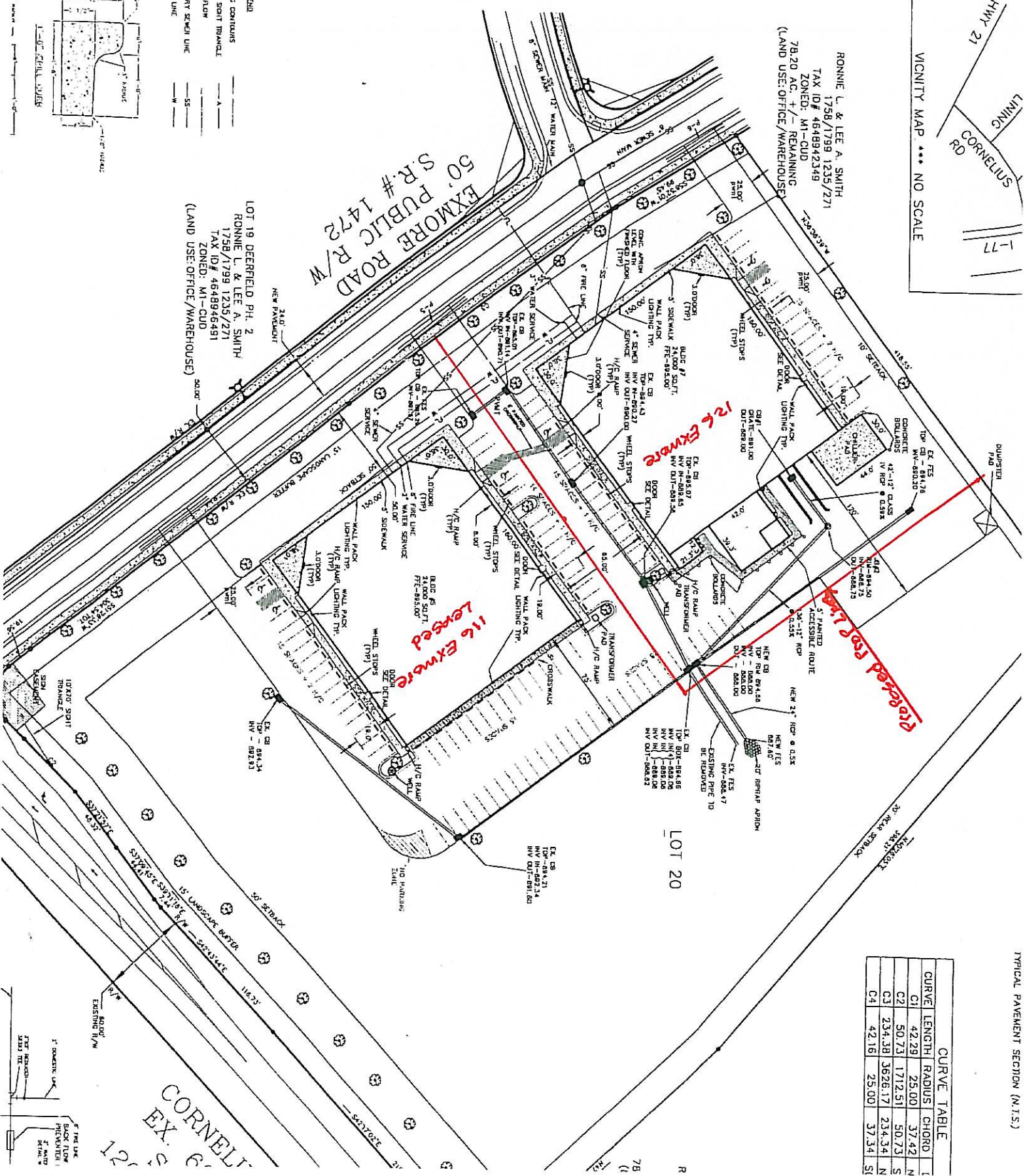
LOT 19 DEERFIELD PH. 2
 RONNIE L & LEE A. SMITH
 1758/1799 1235/271
 TAX ID# 4648946491
 ZONED: M1-CUD
 (LAND USE: OFFICE/WAREHOUSE)



1" = 20'



10' SIGHT TRIANGLE
 10' SIGHT TRIANGLE
 10' SIGHT TRIANGLE



CURVE TABLE

CURVE	LENGTH	RADIUS	CHORD
C1	42.29	25.00	37.42
C2	50.73	1712.51	50.73
C3	234.38	3626.17	234.34
C4	42.16	25.00	37.34

TYPICAL PAVEMENT SECTION (N.T.S.)